



Fairmont
WINDSOR PARK

A grand and indulgent retreat in the English countryside where history and iconic elegance merge.

Located on the edge of historic Windsor Great Park and within an hour of London, the hotel is surrounded by 40 acres of open green space featuring a tranquil lake. The hotel has been designed to reflect the site's heritage while offering modern elegance.

Fairmont
WINDSOR PARK



Fairmont
WINDSOR PARK



RESTAURANTS & BARS

Fairmont
WINDSOR PARK

1215
at Fairmont Windsor Park

ORCHID
TEA ROOM

MOREISH



THE
LIBRARY
CLUB

SCHRODERS'
BOTANICALS BAR

GREENS
FRESHLY MADE WELLNESS



1215

at Fairmont Windsor Park

The fine dining restaurant, 1215, at Fairmont Windsor Park is set on our south lawn overlooking our private terrace and manicured gardens.

An intimate and beautiful setting where you can enjoy a special occasion or indulge in a culinary experience which will make you want to return for our quality British cuisine.

We are proud of the provenance of our locally grown products where we work with The Royal Farms, Windsor artisans and our very own herb and vegetable gardens.

This restaurant and bar were named in recognition of the signing of the Magna Carta in the year 1215 within walking distance from the hotel.



1215

at Fairmont Windsor Park

Also overlooking the south lawn, 1215 bar is located adjacent to 1215 restaurant. For an intimate and relaxed drinking experience or just a simple catch-up with friends, enjoy a mix of exquisite sparkling wines and Champagnes perfectly complemented by an extensive fine wine list, served from our striking bar.

1215 bar also serves a delectable choice of bar food to complement your drinks of for an informal meal.

We welcome children in all our food and beverage venues.



ORCHID
TEA ROOM

The Orchid Tea Room is a vibrant yet calming environment designed to ensure that you enjoy our indulgent afternoon tea experience.

Our expert Pâtisserie and Chocolatier team will provide an outstanding presentation of home-made food served with world-class teas and fine Champagne.

The original owners of the mansion house collected orchids from around the world and displayed them in this room. Our bespoke crockery reflects the beauty of these stunning flowers and this precious environment.





MOREISH serves an extensive traditional breakfast with a moreish twist. The evening offers a culinary experience which captures original and authentic flavours to create an exceptional fusion of European and Middle-Eastern food.

MOREISH will also be offering a collection of indulgent masterclasses hosted by our Chef, Pâtissier and Chocolatier.

Our wine cellar features an extensive selection of wines and Schroders' Botanicals Bar is perfect for an aperitif. Moreish is a welcoming environment which lends itself to socialising and enjoying great food and wine.



THE LIBRARY CLUB

Incorporating authentic features from the original mansion house, such as a cosy fireplace, this stunning lounge is available for daytime meetings and private events.

In the evening, it serves as a lounge offering cocktails, whiskies, brandies, and cold beverages.





S C H R O D E R S'

BOTANICALS BAR

Schroders' Botanicals Bar, located in MOREISH at Windsor Park, offers a wide range of local and unique international gins.

Discover new flavours while meeting new friends. You can enjoy a range of gin masterclasses, from premium tastings to entertaining mixology classes with our expert team.

In the morning, the bar will offer a selection of smoothies and juices to start your day with a healthy boost.



GREENS
FRESHLY MADE WELLNESS

Our wellbeing restaurant situated inside our Spa & Wellness facility is designed for the use of spa guests to enjoy a relaxing, private and casual dining experience.

Choose from our wide selection of freshly made produce and pressed juices. Our wellbeing chef can prescribe food and beverage choices especially with your health in mind.





ROOMS & SUITES

Fairmont

WINDSOR PARK

Fairmont Windsor Park offers 251 stunning bedrooms and suites, many of which offer commanding views of the beautifully landscaped gardens surrounding the hotel. Furnished to a combination of natural stone and soft textures to create an elegant and sumptuous environment, each of the beautifully appointed bedrooms radiates luxury living.

To ensure every stay is memorable we offer butler service, concierge, crèche and a multitude of activities for all ages within the hotel and our 40 acres of grounds.



Fairmont King Room



Deluxe Double Double Room



Fairmont One Bedroom Suite



Fairmont Signature Suites



Fairmont Signature Royal Suite





Room Categories	Square Metres	Total
Queen Eaves Room	24	32
King Eaves Room	36 - 40	10
Accessible Fairmont King Room	33	5
Fairmont King Room	32	130
Fairmont Double Double Room	41 – 44	21
Deluxe Double Double Room	37 – 44	10
Deluxe King with Balcony Room	37 – 44	7
Deluxe Double Double with Balcony Room	41 – 44	3
Deluxe Double Double Terrace Room	41 – 44	1
Fairmont One Bedroom Suite	78 – 101	24
Fairmont One Bedroom King Terrace Suite	78 – 101	3
Luxury Two Bedroom Suite	112 – 131	2
Luxury Two Bedroom Corner Suite	112 – 131	2
Signature Royal Suite	207	1

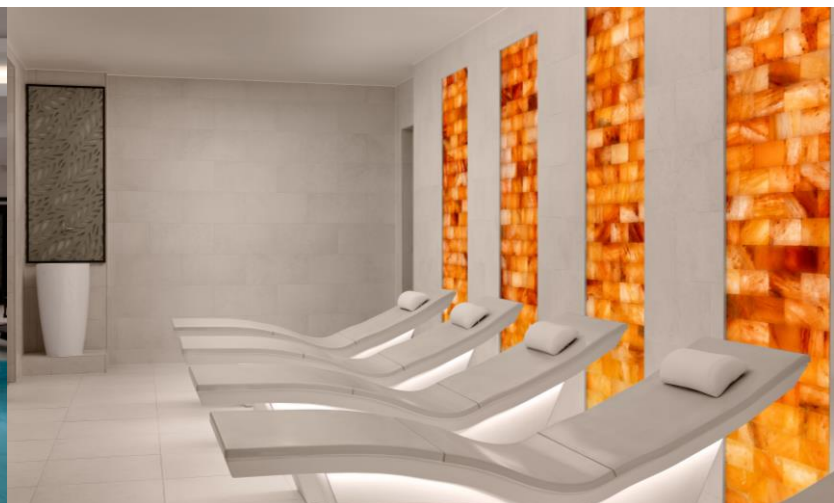


RESTORE & REVIVE

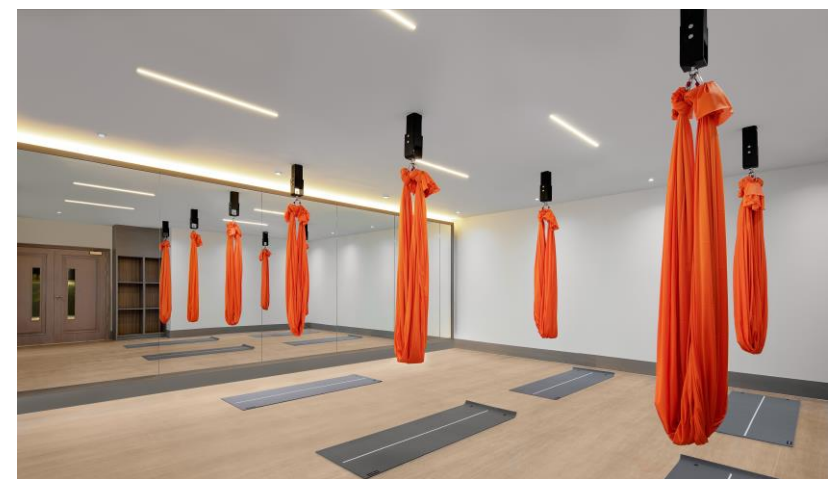
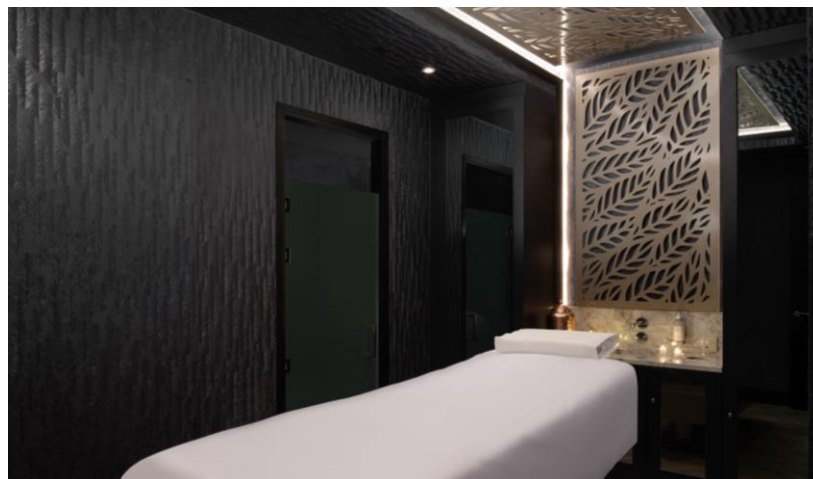

FAIRMONT SPA
& WELLNESS
WINDSOR PARK

The 2,500m² Fairmont Spa & Wellness offers the ultimate approach to wellness, inspired by nature. Setting an unprecedented standard in UK wellness, the experience extends beyond the spa to create a sense of tranquillity across the retreat.

- Cryotherapy chamber
- Indoor and outdoor gym
- Tennis & Padel Courts
- Experience shower, heated tepidarium bench
- Japanese foot bath
- Private Spa Suite with Rasul & Hot Tub
- The FaceBible - Aesthetics clinic
- Wellness Café
- 18 treatment rooms
- Hammam, sauna and steam room
- Indoor and outdoor pool
- Himalayan salt room
- Female Hairdresser
- Truefitt & Hill barber shop
- 4D Scanning accurate to within 3mm
- Colon Hydrotherapy
- Dry Flotation




FAIRMONT SPA
& WELLNESS
WINDSOR PARK





MEETINGS & CONFERENCES



Set aside to one wing of the hotel, our 15 elegantly designed meeting rooms will stimulate thought, discussion and delight and mirror our ethos and commitment throughout the hotel towards wellness.

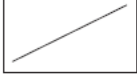
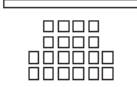
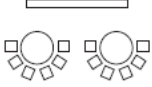
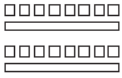
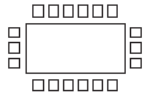
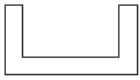

Enjoy elegant service in stunning surroundings and a stress-free planning process to ensure your event or meeting is memorable for all attendees.

If something is worth celebrating, then it's worth celebrating in style. Our 800m² pillar-free ballroom can cater for events up to 700 guests, and our outstanding outside space is perfect for outdoor team building events.



Fairmont

WINDSOR PARK

	Area m ² Sq Ft	Theatre	Cabaret	Classroom	Boardroom	U Shape	Banquet
							
Monarch 1	193 2,077	200	96	100	38	48	120
Monarch 2	193 2,077	200	96	100	38	48	120
Monarch 1 & 2	386 4,154	400	192	210	80	90	250
Admiral	139 1,498	100	64	60	34	39	80
Apollo - Lounge	66 710	NA	NA	NA	NA	NA	NA
Blue Angel - Lounge	66 710	NA	NA	NA	NA	NA	NA
Emperor	71 764	60	32	36	20	24	50
Emerald	40 430	30	24	18	14	16	NA
Bluebell	25 269	NA	NA	NA	8	NA	NA
Rosemary	34 366	NA	NA	NA	10	NA	NA
Primrose	50 538	40	20	27	14	14	NA
Holly	48 516	40	20	27	14	14	NA
Lilac	74 796	60	32	36	18	24	40
Lavender	57 613	60	32	36	18	24	40
Arora Ballroom 1	400.5 4,312	330	175	180	NA	NA	250
Arora Ballroom 2	400.5 4,312	330	175	180	NA	NA	250
Arora Ballroom 1 & 2	801 8,625	700	375	400	NA	NA	500





WEDDINGS & CELEBRATIONS

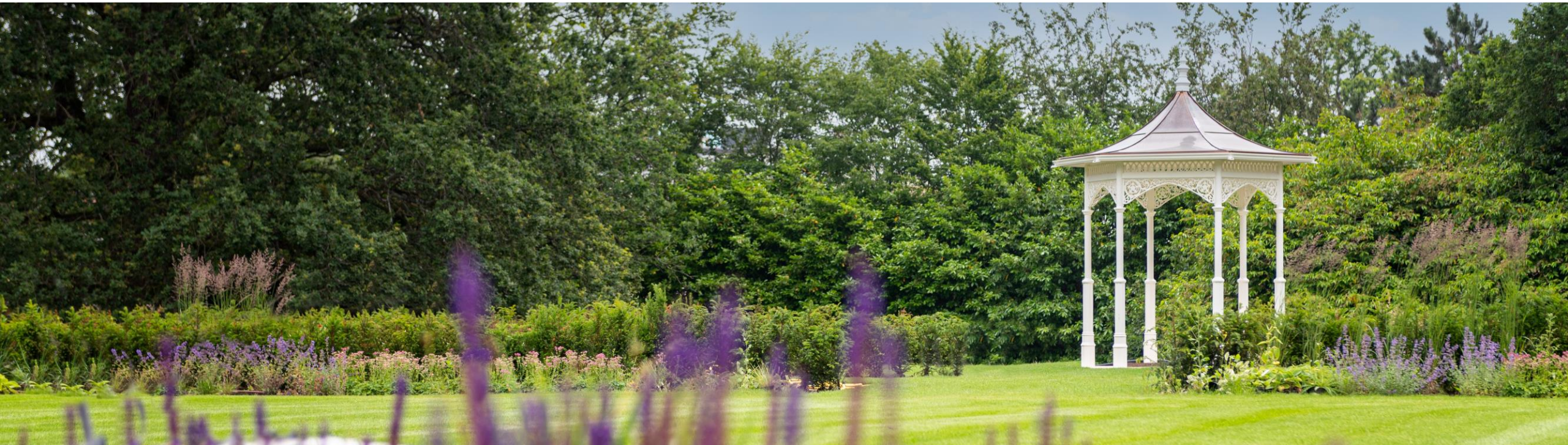


Set aside to one wing of the hotel, our elegantly designed reception rooms will delight and mirror our ethos and commitment throughout the hotel towards wellness.

Our beautifully landscaped gardens perfectly set the scene for weddings and large celebrations. Enjoy elegant service in stunning surroundings and a stress-free planning process to ensure your big day is truly memorable.

If something is worth celebrating, then it's worth celebrating in style. Our 800m² pillar-free ballroom can cater for events up to 700 guests, and our outstanding outside space is perfect for a marquee and outdoor events.

We are licenced for ceremonies in the Arora Ballroom, Monarch Suite, Admiral Suite, The Library Club and in our outside pagoda.



Arora Ballroom

Our exceptional Arora Ballroom is the ideal place to hold the most memorable and lavish celebration.

Experienced and personalised service combined with our dedicated planning team will make sure to provide extraordinary support from the moment you enquire, through to carriages after your event.

This 800m² pillar-free ballroom can cater for events up to 600 guests, and is perfect for a truly exceptional party.



Monarch Suite

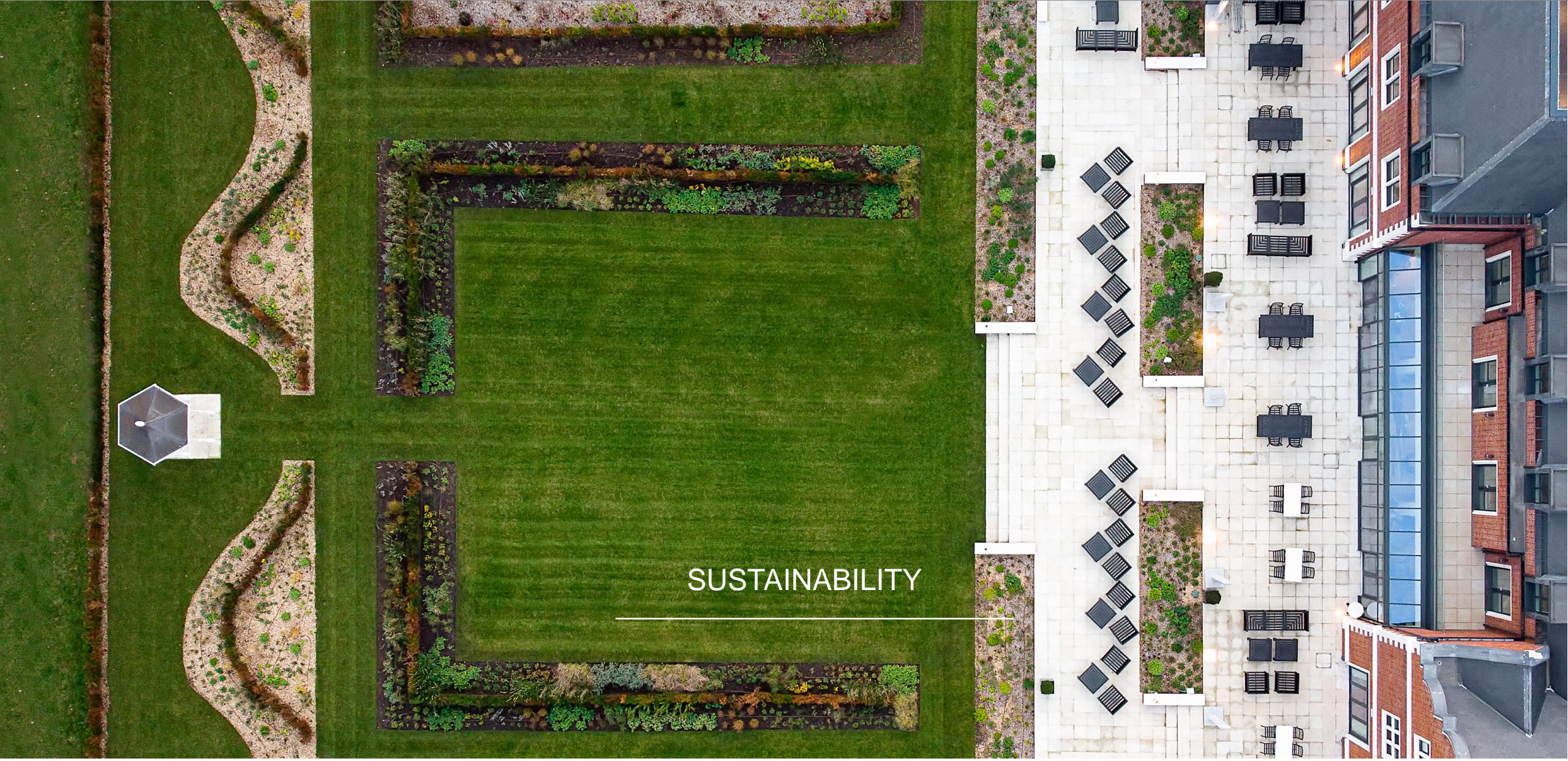
Located on the ground floor overlooking a private terrace and the landscaped gardens, the Monarch Suite is the perfect space for an enchanting event.

Each event will be tailored to your requirements and our dedicated and expert team will ensure not only a smooth running but also a memorable experience for all attendees.

The Monarch Suite is an elegant 386m² room that sits up to 260 people for a banquet.



SUSTAINABILITY



There are several sustainability projects underway at the property and our goal is to be a highly sustainable business. Both Accor, with its Planet 21 and Fairmont Hotels & Resorts, with its Fairmont Promise, have very high standards when it comes to sustainability and Fairmont Windsor Park will be in line with those. Below is an outline of some of the fantastic initiatives that are already happening.

1. Each of our carefully selected spa and wellness partners has been chosen not only because they make exceptional, market-leading products. It is also because they are pioneering in their commitment to preserving the source and regeneration of sustainable materials. Among other initiatives, spa consumables such as spa slippers have been selected to uphold our sustainability commitment. Our jute, coir and coconut slippers are made from the thickest and most resilient of all commercial natural fibres – a waste material extracted from the outer shell of coconuts grown on land throughout the tropics.
2. Our Chefs will grow herbs and plants in our Kitchen Garden for use in several of our restaurants. We have two beehives on the hotel grounds, cared for by our own beekeeper. Our head gardener will plant flowers and plants that the bees and butterflies will thrive on. The honey production, which is in process, will be used in our restaurants. Where possible we are sourcing food locally from The Royal Farms and Windsor artisans.
3. Since the building works commenced in 2018, we have engaged with both Arboriculture and Ecology consultants to ensure all works were carried out with minimal impact on the flora and fauna around the development. We have installed four bat boxes both in the brickwork of the building in addition to tree mounted boxes at various locations around the estate.
4. During the construction phase we installed full tree protection fencing around all protected trees and any landscaped areas that we had to drive machines over had the soil de-compacted to ensure no damage to the tree root systems. We have also planted more trees and vegetation than were removed for the new hotel. All of the wood chips used around the estate are made from trees that have either fallen in storms or removed to enable the hotel's development. Only trees approved by the local authority were removed.
5. Washing machines and dryers are made of almost completely recyclable material. The washing machines reduce energy, water and detergent consumption. The dryers adjust heat and time parameters to help save up to 12 minutes per cycle.
6. We are incorporating combined heat and power units to generate carbon savings utilising low/zero carbon (LZC) technology. The CHP unit (combined heat and power) uses a fuel cell technology that generates electricity by taking energy from fuel at a chemical level rather than burning it. It uses a steam reformer to convert methane in the gas supply into carbon dioxide and hydrogen. The hydrogen then reacts with the oxygen in the fuel cell to produce electricity.
7. Our ventilation systems incorporate MVHR (mechanical ventilation with heat recovery) throughout to reduce energy usage. The development will therefore comply with the current version of Part L of the Building Regulations, that is Part L2 2013.
8. The most appropriate LZC technology was CHP (combined heat and power) due to the large and relatively constant domestic hot water load.





THANK YOU
